

CLINICAL RESEARCH

## Utility of myeloperoxidase in the differential diagnosis of acute coronary syndrome



Pilar Calmarza<sup>a,\*</sup>, Carlos Lapresta<sup>b</sup>, María Martínez<sup>c</sup>, Raquel Lahoz<sup>a</sup>, Javier Povar<sup>d</sup>

<sup>a</sup> Department of Clinical Biochemistry, University Hospital Miguel Servet, Zaragoza, Spain

<sup>b</sup> Department of Preventive Medicine, Barbastro Hospital, Huesca, Spain

<sup>c</sup> Department of Endocrinology, University Hospital Miguel Servet, Zaragoza, Spain

<sup>d</sup> Department of Urgences, University Hospital Miguel Servet, Zaragoza, Spain

Received 19 July 2017; accepted 6 November 2017

### KEYWORDS

Myeloperoxidase;  
Acute coronary  
syndrome;  
Unstable angina;  
Emergency  
department;  
Chest pain;  
Spain

### Abstract

**Objectives:** To determine the usefulness of myeloperoxidase in discriminating between patients with acute coronary syndrome and patients with chest pain by other causes.

**Methods:** The study included all patients over 18 years of age who come consecutively to the emergency department from September 2015 to December 2015 with chest pain of non-traumatic origin. The initial patient evaluation was performed according to the study protocol for patients with suspected acute coronary syndrome (ACS) in our Emergency Department. This included the serial measurement of troponin, and in this case myeloperoxidase, with serialization on admission and at 6 h.

For the determination of myeloperoxidase (MPO), a single step sandwich enzyme immunoassay by Siemens, automated on a Dimension analyser, was used.

**Results:** Statistically significant differences were observed in the concentration of myeloperoxidase at time 0 among patients diagnosed with ACS: 505 (413) pmol/L, and non-ACS patients: 388 (195) pmol/L ( $p < .001$ ), as well as at 6 h ( $p < .001$ ).

An area under the curve ROC of 0.824 was obtained at 6 h for ACS patients, with a confidence interval of 95% from 0.715 to 0.933 and a level of significance of  $p < .001$ .

Statistically significant differences were also found in the concentration of myeloperoxidase at time 0 and at 6 h among patients with ACS and patients with heart disease other than coronary artery disease.

\* Corresponding author. Department of Clinical Biochemistry, University Hospital Miguel Servet, C/ Cardenal Gomá s/n, 50009 Zaragoza, Spain. Tel.: +34 976 76 55 00x14 21 57.

E-mail address: [mpcalmarza@salud.aragon.es](mailto:mpcalmarza@salud.aragon.es) (P. Calmarza).

**PALABRAS CLAVE**

Mieloperoxidasa;  
 Síndrome coronario  
 agudo;  
 Angina inestable;  
 Servicio de urgencias;  
 Dolor torácico;  
 España

**Conclusions:** The concentration of MPO helps to differentiate between ACS and non-ACS patients, as well as between ACS patients and patients with heart diseases other than coronary artery disease.

© 2017 Instituto Nacional de Cardiología Ignacio Chávez. Published by Masson Doyma México S.A. This is an open access article under the CC BY-NC-ND license (<http://creativecommons.org/licenses/by-nc-nd/4.0/>).

## Utilidad de la determinación de mieloperoxidasa en el diagnóstico diferencial del síndrome coronario agudo

### Resumen

**Objetivos:** Conocer la utilidad de mieloperoxidasa (MPO) para discriminar entre pacientes con síndrome coronario agudo y dolor torácico de otras causas.

**Métodos:** De septiembre a diciembre de 2015 se incluyeron todos los pacientes mayores de 18 años que acudieron de forma consecutiva al servicio de urgencias con dolor torácico de origen no traumático. La evaluación inicial del paciente se realizó de acuerdo con el protocolo de estudio para pacientes con sospecha de síndrome coronario agudo (SCA) en nuestro servicio de urgencias, que incluye la medición de troponina y en este caso MPO, con serialización al ingreso y a las 6 h.

Para la determinación de MPO se utilizó un inmunoensayo enzimático de tipo sándwich, de una sola etapa de Siemens, automatizado en un equipo Dimension®.

**Resultados:** Se obtuvieron diferencias estadísticamente significativas en la concentración de MPO a tiempo 0 entre los pacientes con diagnóstico de SCA: 505 (413) pmol/l y los pacientes no SCA: 388 (195 pmol/l ( $p < 0.001$ ), así como a las 6 h ( $p < 0.001$ ).

Se obtuvo a las 6 h un área bajo la curva ROC para pacientes con SCA de 0.824 con un intervalo de confianza del 95% de 0.715 a 0.933 y un grado de significación  $p < 0.001$ .

También se obtuvieron diferencias estadísticamente significativas en la concentración de MPO tanto a tiempo 0 como a las 6 h entre pacientes con SCA y pacientes con enfermedad cardiaca diferente de enfermedad coronaria.

**Conclusiones:** La concentración de MPO sirve para diferenciar entre pacientes SCA y pacientes que no son SCA, así como entre pacientes SCA y pacientes con otras enfermedades cardiacas diferentes a la enfermedad coronaria.

© 2017 Instituto Nacional de Cardiología Ignacio Chávez. Publicado por Masson Doyma México S.A. Este es un artículo Open Access bajo la licencia CC BY-NC-ND (<http://creativecommons.org/licenses/by-nc-nd/4.0/>).

## Introduction

Cardiovascular disease is the leading cause of death in developed countries and it is expected to be in 2020 the first cause of death in developing countries. On the other hand, acute chest pain of possible coronary origin is one of the most frequent causes of consultation in emergency services.

Early diagnosis of acute coronary syndrome (ACS) is frequently a challenging task, while immediate risk stratification remains crucial for the prompt implementation of appropriate therapy in this setting.

However, the prolonged release pattern of troponins, well established biomarkers of myocardial necrosis, and limited sensitivity of the routine troponin assay make it difficult to diagnose ACS at an early stage.

The ACS is usually caused by the rupture of a coronary plaque producing a sudden and critical reduction in blood flow and includes various clinical manifestations ranging from Acute Myocardial Infarction (AMI) with ST-segment

elevation and myocardial infarction without elevation of ST segment to unstable angina.

Myeloperoxidase (MPO) is an enzyme released by the activation and degranulation of polymorphonuclear cells and monocytes that is involved in the production of free radicals, responsible for the LDL cholesterol oxidation. The oxidative modification of LDL leads to the increase of its uptake and degradation by macrophages, resulting in cholesterol deposit and formation of foam cells, the cellular mark of the fatty streaks.

It is also involved in the activation of metalloproteinases and in the instability and plaque rupture<sup>1,2</sup> as well as in the bioavailability of nitric oxide, derived of endothelium, thereby altering the tone and certain anti-inflammatory properties of the endothelium.

Some studies show that the concentration of MPO is higher in ACS patients<sup>3,4</sup> thus, it has been proposed as a useful risk marker and diagnostic tool in ACS and in patients admitted to the emergency department for chest pain.<sup>5</sup>

Also, whereas troponin T takes 3–6 h to rise following chest pain, MPO levels already rise even within 2 h after the onset of symptoms.

But, although it seems that myeloperoxidase can independently predict the onset of coronary artery disease,<sup>6</sup> there are few studies comparing the value of the determination of myeloperoxidase and other cytokines that reflect endothelial activity among patients with acute coronary syndrome and patients with stable angina or other causes of non-traumatic chest pain.<sup>7</sup>

## Material and methods

From September 2015 to December 2015 we included all patients over 18 years of age who come consecutively to the emergency department with chest pain of non-traumatic origin. Exclusion criteria were: age less than 18 years, active cancer, pulmonary embolism, cerebral infarction or peripheral vascular disease as well as chronic advanced diseases such as cirrhosis and heart or kidney failure, communication difficulties, cognitive impairment, acute infections or inflammatory states. The study design was transversal analytical.

Patients who came to the emergency department 12 h after the onset of chest pain were also excluded, since in these patients is not necessary Troponin serial determinations, as well as patients whose first Troponin was positive, because in these cases the diagnosis of Acute Myocardial Infarction (AMI) is already firmly established.

In each patient who participated it was obtained information on epidemiological data such as age, sex and risk factors for cardiovascular disease such hypertension (blood pressure  $\geq 140/90$  mmHg or treatment with antihypertensive drugs), diabetes mellitus, dyslipidemia (when the patient is taking lipid-lowering drugs), smoking, family history in first degree of ischemic heart disease and obesity (BMI  $> 30$  kg/m<sup>2</sup>).

In each patient who participated, informed consent was obtained.

The initial patient evaluation was performed according to the study protocol patient with suspected ACS in our emergency department, which includes the measurement of troponin and in this case myeloperoxidase with serialization on admission and at 6 h.

After 15 min of resting 20 ml of blood was extracted, 10 ml in a EDTA container for the determination of myeloperoxidase and 10 ml in a tube without additives, only with gel separator for determination of serum parameters.

In our study MPO was measured in plasma EDTA samples and the plasma was quickly separated and frozen at -80 °C until determination of myeloperoxidase. The preferred sample for determination of MPO is plasma with EDTA, since serum or heparin plasma gave consistently higher values due to MPO leakage from leucocytes.<sup>8</sup>

For the determination of myeloperoxidase a single step sandwich enzyme immunoassay of Siemens, automated in Dimension equipment, was used.

The measurement interval of myeloperoxidase is between 20 and 5000 pmol/L and its detection limit is 13 pmol/L.

For a level of myeloperoxidase of  $\leq 20$  pmol/L a variation coefficient of 20% is obtained.

According to the manufacturer the detection limit for this technique is 1.5 pg/ml and shows no cross reactivity with IL-1alpha, IL-1beta, IL-2, IL-3, IL-4, IL-8 and alpha TNF.

## Statistical analysis of the data

Continuous variables are expressed as mean  $\pm$  standard deviation or median (interquartile range) according to their distribution, and qualitative variables as frequencies. For comparison of qualitative variables the test of Chi Squared was used and for comparison of quantitative variables the nonparametric Mann–Whitney test was used. For multiple comparisons the Bonferroni method was used. It is considered significant a value of  $p < 0.05$ . Myeloperoxidase diagnostic performance is calculated by analyzing the area under the Receiver Operating Characteristic (ROC) curve with a confidence interval of 95% (95% CI).

For statistical analysis of the data the SPSS version 20.0 (IBM, USA) has been used.

## Results

During the study period, 83 patients were included. The average age of them was  $68 \pm 15$  years and 52% were male. NSTEMI were diagnosed in 15.7% of all patients and 19.3% of them had unstable angina. 13.2% were diagnosed with stable angina. 20.5% of patients had heart disease different of ACS and 31.3% of them were diagnosed with chest pain of non-coronary origin. The classification of patients was done as follows:

Stable angina was diagnosed as chest pain typical of cardiac ischemia on exertion.<sup>9</sup>

Unstable angina was diagnosed in patients, who had new-onset angina within 2 months after a previous bout; angina with a progressive crescendo pattern or with the angina episodes increasing in frequency and/or duration; or angina that occurred at rest.<sup>10</sup>

NSTEMI. Patients with persistent or transient ST-segment depression, inversion or pseudo-normalization of T-waves during symptoms and subsequent normalization.

ACS patients. It includes patients with unstable angina and NSTEMI patients.

Patients with heart disease different to cardiac coronary disease (CAD). When CAD was excluded by additional testing.

Non-cardiac chest pain. When a cardiac etiology was excluded.

Table 1 shows the general characteristics of the patient sample studied as well as those of the ACS and non-ACS patients.

No statistically significant differences were found between ACS and non-ACS patients in age, gender, and cardiovascular risk factors except for hypertension.

There are a greater proportion of hypertensive patients in the group of patients with ACS ( $p < 0.01$ ) (Table 1).

**Table 1** General characteristics of the sample of patients studied.

Variable	General population <i>n</i> = 83	ACS patients	Non-ACS patients	<i>p</i>
Males <i>n</i> (%)	52 (62.7)	20 (68.96)	32 (59.26)	0.383
Age in years	73 (23)	74 (18)	69 (23)	0.123
Myeloperoxidase t0	432 (264)	505 (413)	388 (195)	<0.001
Myeloperoxidase t6	410 (280)	550 (599)	316 (175)	<0.001
<i>Cardiovascular risk factors n</i> (%)				
Hypertension <i>n</i> (%)	46 (55.42)	21 (72.4)	25 (46.39)	<0.01
IDDM <i>n</i> (%)	6 (7.23)	3 (10.34)	3 (5.55)	0.382
NIDDM <i>n</i> (%)	16 (19.28)	7 (24.13)	9 (16.66)	0.346
Dislipemia <i>n</i> (%)	29 (34.94)	13 (44.82)	16 (27.77)	0.081
Hypothyroidism <i>n</i> (%)	4 (4.82)	1 (3.44)	3 (5.55)	0.705
Obesity <i>n</i> (%)	5 (6.02)	1 (3.44)	4 (7.41)	0.503
Smoking (yes) <i>n</i> (%)	14 (16.81)	6 (20.69)	8 (11.11)	0.546

ACS, acute coronary syndrome; IDDM, insulin dependent diabetes mellitus; NIDDM, non-insulin dependent diabetes mellitus.

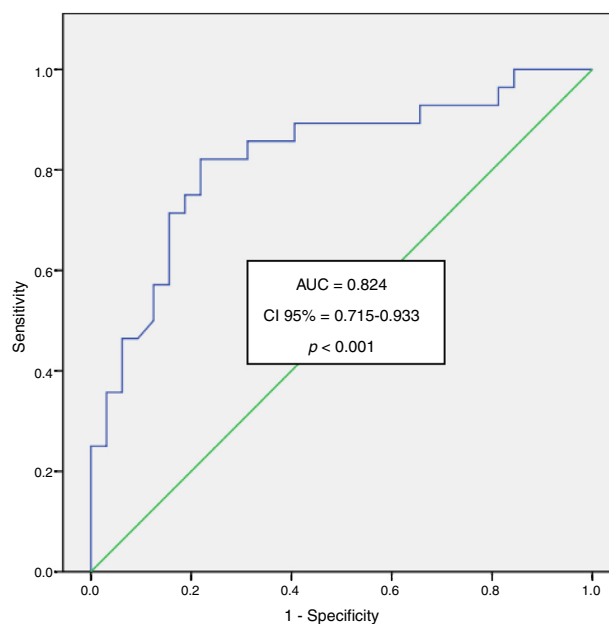
This shows that the differences in MPO concentration between the two groups are not influenced by these potentially confounding variables.

No statistically significant differences between the concentration of myeloperoxidase at time 0: 432 (264) pmol/L and at 6 h: 410 (280) pmol/L were obtained in the total group of patients ( $p=0.812$ ). We obtained statistically significant differences in the values of myeloperoxidase at time 0 among patients diagnosed with ACS (NSTEMI patients and unstable angina patients): 505 (413) pmol/L and non-ACS patients: 388 (195) pmol/L ( $p<0.001$ ) as well as at 6 h: 550 (599) pmol/L in patients ACS vs. 316 (175) pmol/L in non-ACS patients ( $p<0.001$ ).

The analysis of the area under the curve Receiver Operating Characteristics (ROC) for myeloperoxidase in the SCA patients at time 0 was of 0.755 with a confidence interval of 95% from 0.644 to 0.866 and a degree of significance  $p<0.001$ . For the time 6 we obtained an area under the curve of 0.824 with a confidence interval of 95% from 0.715 to 0.933 and a degree of significance  $p<0.001$  (Fig. 1).

When we refer to differences in the concentration of myeloperoxidase among different groups according to their pathology, we can appreciate the following:

- We find statistically significant differences in the concentration of myeloperoxidase when comparing the group of patients ACS with the patients with chest pain of non-coronary origin, at time 0: 505 (413) pmol/L vs. 345.5 (215) pmol/L ( $p<0.01$ ) as well as at 6 h: 550 (599) pmol/L vs. 249 (237) pmol/L ( $p<0.05$ ) (Fig. 2).
- It was also obtained statistically significant differences in the concentration of myeloperoxidase at time 0 among patients with ACS: 505 (413) pmol/L and patients with heart disease different of coronary artery disease (CAD), 392 (119.5) pmol/L ( $p<0.05$ ) as well as at 6 h: 550 (599) pmol/L vs. 318 (90) pmol/L ( $p<0.05$ ) (Fig. 2).
- Also, we obtained statistically significant differences when we compare the concentrations of myeloperoxidase in patients with ACS with those with stable angina at 6 h: 550 (599) pmol/L vs. 345 (242) pmol/L ( $p<0.05$ ) (Fig. 2) and at 0 h the differences did not reach statistical significance: 505 (413) pmol/L vs. 396 (346) pmol/L ( $p=0.098$ ).



**Figure 1** Analysis of the area under the ROC curve for myeloperoxidase at 6 h in the group of acute coronary syndrome patients.

AUC = area under the ROC curve. CI = confidence interval.

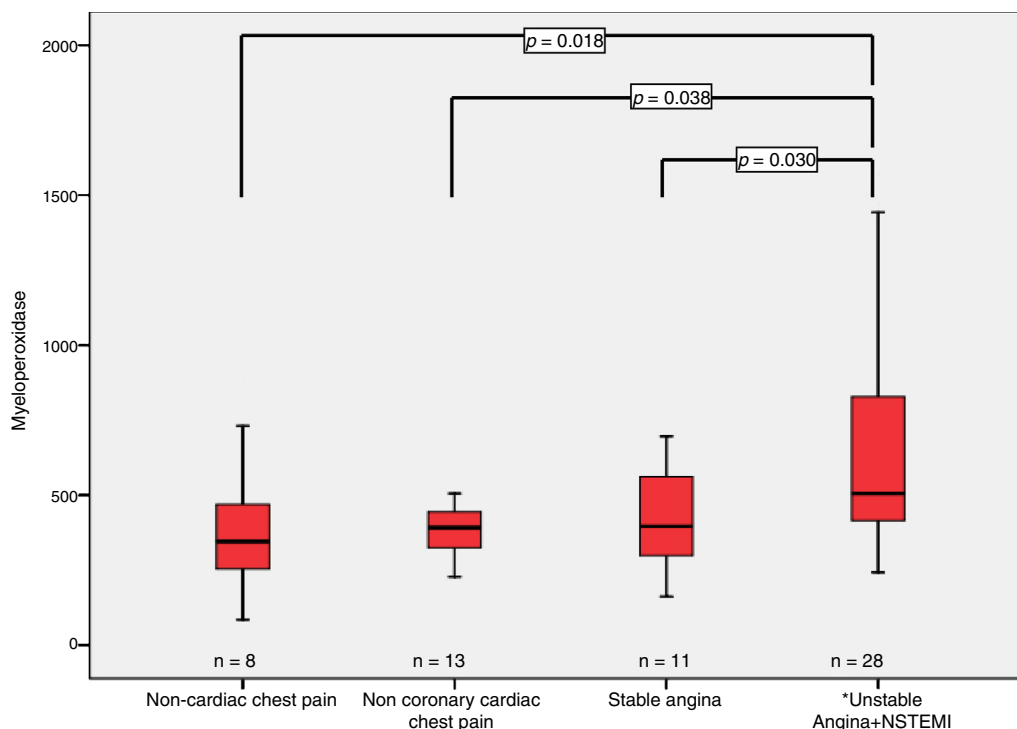
## Discussion

Zhang et al.<sup>11</sup> were the first to describe the correlation between serum MPO levels, leukocyte MPO levels and the presence of coronary artery disease.

In our study significant increases in MPO levels were observed in acute coronary syndrome patients compared to patients without ACS ( $p<0.001$ ).

It confirms earlier reports indicating markedly elevated plasma concentrations of MPO within 2 h of symptoms onset in patients with myocardial infarction<sup>12</sup> or in patients with ACS presenting within 3–12 h of their last episode of chest pain.<sup>13</sup>

MPO is linked to both inflammation and oxidative stress by its location in leukocytes and its role in catalyzing the



**Figure 2** Myeloperoxidase concentration at 6 h among different groups of patients according to their pathology. \*Patients with acute coronary syndrome (patients with non-ST segment elevation myocardial infarction (NSTEMI) + patients with unstable angina).

formation of oxidizing agents. It seems to contribute directly to the pathogenesis of ACS. Oxidative stress participates in all stages of cardiovascular disease, from lipoprotein modification to plaque rupture, and biomarkers of oxidative stress predict development of coronary artery disease (CAD).<sup>14</sup>

Several lines of evidence strongly suggest also the existence of a link between MPO and CAD. Genetic studies of subjects with either total or subtotal MPO deficiency<sup>15</sup> or of subjects with reduced expression of MPO due to a promoter polymorphism<sup>16,17</sup> seem to be less likely to develop CAD or its clinical manifestations such as non-fatal myocardial infarction or cardiac death.

Elevated MPO in our study was associated with the presence of acute coronary syndrome with an area under ROC curve of 0.755 (CI 0.644–0.866;  $p < 0.001$ ) at time 0 and even better values of the area under the curve ROC at 6 h 0.824 (CI 0.715–933;  $p < 0.001$ ).

Our results show that the concentration of myeloperoxidase at 6 h allows us to discriminate better between ACS and non-ACS patients (best area under the ROC curve) and between ACS patients and patients with stable angina.

Like Samsamshariat et al.<sup>18</sup> we find plasma MPO levels higher at time 0 in SCA patients: 505 (413) pmol/L than in patients with stable angina 396 (346) pmol/L and muscular pain patients 345.5 (215) pmol/L as well as at 6 h.

MPO progressively increases with the increase in clinical severity of CAD from stable CAD to non-ST segment elevation acute coronary syndrome.

The higher concentration of MPO found in unstable CAD patients as compared with stable CAD patients may be related to plaque instability and neutrophil activation that have been demonstrated by some studies.<sup>19,20</sup>

This also highlights that the elevation of MPO can facilitate the diagnosis of ACS, having a greater interest in acute conditions, such as NSTEMI or unstable CAD.

Another important conclusion of our study is that the concentration of both MPO at 0 h and at 6 h allows differentiation between SCA patients and patients with any heart disease different from coronary artery disease, results that agree with those obtained by Sawicki et al.<sup>21</sup>

However, in a recent report Eggers et al.<sup>22</sup> argued that MPO provides no clinically relevant information in unselected patients with chest pain presenting within 8 h.

They use also a fully automated chemiluminescent microparticle immunoassay but do not find significant differences in median MPO concentrations between patients with unstable angina or myocardial infarction and those other with heart disease or non-cardiac disease were found.

Our study was performed like as the study performed by Sawicki et al.<sup>21</sup> in one emergency department, whereas the study of Eggers et al.<sup>22</sup> was performed in three different medical centers, which might have influenced the selection of chest pain patients. On the other hand, several recent clinical studies have shown that elevated MPO level correlates with angiographic severity of CAD and predicts adverse events in patients with acute coronary syndromes.<sup>23–25</sup>

In the study by Baldus et al.,<sup>13</sup> myeloperoxidase remained an independent and powerful predictor of cardiac risk at both 30 days and follow-up.

In conclusion, although we have a small number of patients ( $n=83$ ) we can say that myeloperoxidase clarifies the pathophysiology of ACS and also enables a better

understanding of ACS helping the physician to differentiate between ACS patients and non-ACS patients.

## Funding

No endorsement of any kind received to conduct this study/article.

## Conflict of interest

The authors declare no conflict of interest.

## References

- Nicholls SJ, Hazen SL. Myeloperoxidase and cardiovascular disease. *Arterioscler Thromb Vasc Biol.* 2005;25:1102–11.
- Brennan ML, Hazen S. Emerging role of myeloperoxidase and oxidant stress markers in cardiovascular risk assessment. *Curr Opin Lipidol.* 2003;14:353–9.
- Buffon A, Biasucci LM, Liuzzo G, et al. Widespread coronary inflammation in unstable angina. *N Engl J Med.* 2002;347:5–12.
- Jaremo P, Hansson G, Nilsson O. Elevated inflammatory parameters are associated with lower platelet density in acute myocardial infarctions with ST-elevation. *Thromb Res.* 2000;100:471–8.
- Loria V, Dato I, Graziani F, et al. Myeloperoxidase: a new biomarker of inflammation in ischemic heart disease and acute coronary syndromes. *Mediators Inflamm.* 2008;2008:135625.
- Zouridakis E, Avanzas P, Arroyo-Espiguero R, et al. Markers of inflammation and rapid coronary artery disease progression in patients with stable angina pectoris. *Circulation.* 2004;110:1747–53.
- Roman RM, Camargo PV, Borges FK, et al. Prognostic value of myeloperoxidase in coronary artery disease: comparison of unstable and stable angina patients. *Coron Artery Dis.* 2010;21:129–36.
- Shih J, Datwyler SA, Hsu SC, et al. Effect of collection tube type and preanalytical handling on myeloperoxidase concentrations. *Clin Chem.* 2008;54:1076–9.
- Austen WG, Edwards JE, Frye RL, et al. A reporting system on patients evaluated for coronary artery disease. Report of the Ad Hoc Committee for grading of coronary artery disease, council on cardiovascular surgery, American Heart Association. *Circulation.* 1975;51:5–40.
- Hamm CW, Braunwald E. A classification of unstable angina revisited. *Circulation.* 2000;102:118–22.
- Zhang R, Brennan ML, Fu X, et al. Association between myeloperoxidase levels and risk of coronary artery disease. *JAMA.* 2001;286:2136–42.
- Goldmann BU, Rudolph V, Rudolph TK, et al. Neutrophil activation precedes myocardial injury in patients with acute myocardial infarction. *Free Radic Biol Med.* 2009;47:79–83.
- Baldus S, Heeschen C, Meinertz T, et al., CAPTURE Investigators. Myeloperoxidase serum levels predict risk in patients with acute coronary syndromes. *Circulation.* 2003;108:1440–5.
- Heslop CL, Frohlich JJ, Hill JS. Myeloperoxidase and C-reactive protein have combined utility for long-term prediction of cardiovascular mortality after coronary angiography. *J Am Coll Cardiol.* 2010;55:1102–9.
- Kutter D, Devaquet P, Vanderstocken G, et al. Consequences of total and subtotal myeloperoxidase deficiency: risk or benefit? *Acta Haematol.* 2000;104:10–5.
- Nikpoor B, Turecki G, Fournier C, et al. A functional myeloperoxidase polymorphic variant is associated with coronary artery disease in French-Canadians. *Am Heart J.* 2001;142:336–9.
- Asselbergs FW, Reynolds WF, Cohen-Tervaert JW, et al. Myeloperoxidase polymorphism related to cardiovascular events in coronary artery disease. *Am J Med.* 2004;116:429–30.
- Samsamshariat SZ, Basati G, Movahedian A, et al. Elevated plasma myeloperoxidase levels in relation to circulating inflammatory markers in coronary artery disease. *Biomark Med.* 2011;5:377–85.
- Sugiyama S, Okada Y, Sukhova GK, et al. Macrophage myeloperoxidase regulation by granulocyte macrophage colony-stimulating factor in human atherosclerosis and implications in acute coronary syndromes. *Am J Pathol.* 2001;158:879–91.
- Rudolph V, Steven D, Gehling UM, et al. Coronary plaque injury triggers neutrophil activation in patients with coronary artery disease. *Free Radic Biol Med.* 2007;42:460–5.
- Sawicki M, Sypniewska G, Kozinski M, et al. Diagnostic efficacy of myeloperoxidase for the detection of acute coronary syndromes. *Eur J Clin Invest.* 2011;41:667–71.
- Eggers KM, Dellborg M, Johnston N, et al. Myeloperoxidase is not useful for the early assessment of patients with chest pain. *Clin Biochem.* 2010;43:240–5.
- Brennan ML, Penn MS, Van Lente F, et al. Prognostic value of myeloperoxidase in patients with chest pain. *N Engl J Med.* 2003;349:1595–604.
- Mocatta TJ, Pilbrow AP, Cameron VA, et al. Plasma concentrations of myeloperoxidase predict mortality after myocardial infarction. *J Am Coll Cardiol.* 2007;49:1993–2000.
- Cavusoglu E, Ruwende C, Eng C, et al. Usefulness of baseline plasma myeloperoxidase levels as an independent predictor of myocardial infarction at two years in patients presenting with acute coronary syndrome. *Am J Cardiol.* 2007;99:1364–8.